

SPECIFICATION

Voltage Rate:150V
 Current Rate:1.5 AMP
 Insulation Resistance: 500M Ω Min.
 Contact Resistance:20m Ω Max.
 Dielectric Voltage:1500V AC for one minute
 Operation Temperature: -40°C to +85°C
 Storage Temperature: -40°C to +85°C

MATERIAL

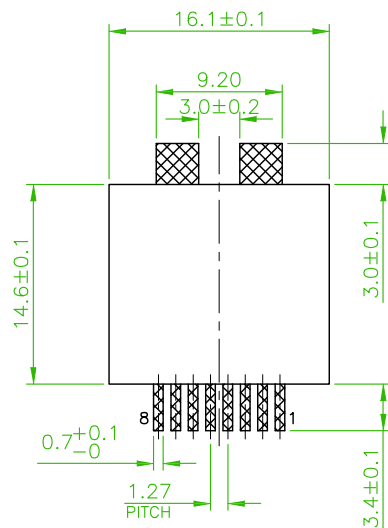
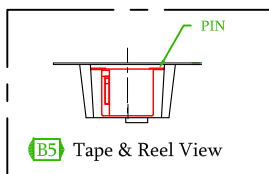
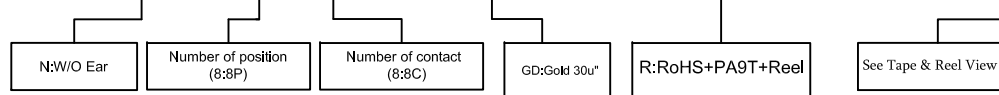
Housing & Insert:PA46, UL94V-0, black
 Terminal:Copper Alloy

NOTE

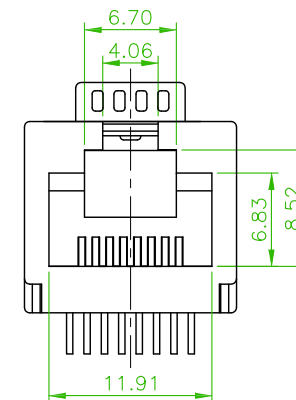
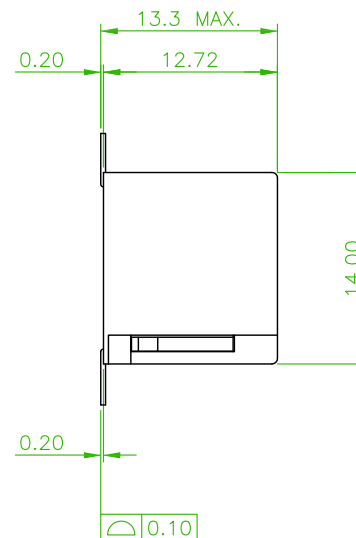
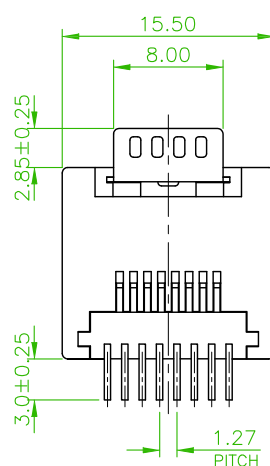
Symbol " **B5** " means serial as Order Information shown

ORDER INFORMATION


5 R J 1 M S 0 0 N 0 N - 8 8 G D 0 0 R - 738 - B 5



RECOMMENDED PCB LAYOUT
 PCB THICKNESS: 1.6mm
 TOLERANCE: ±0.05mm (TOP VIEW)



REV.	ECN NO. OR DESCRIPTION	REVISED	DATE

 耀德精密有限公司 Amtek Technology Co., Ltd. TEL: 886-2-2260-6878 FAX: 886-2-2260-8030	品名 TITLE	MODULAR JACK TOP ENTRY			頁數 Page	1/1
	品號 PART NO.	5RJ1MS00N0N-88GD00R-738-B5			繪圖 DRAWN	Mia 2018/04/13
	圖號 DRAWING NO.	GW082-MD079	版本 REV.	A	核對 CHECKED	Josh 2018/04/13
	客戶品號 CUSTOMER P/N		比例 SCALE	None	承認 APPROVED	Jason 2018/04/13
	公差 TOLERANCE	.X ±0.25 .XX ±0.13	單位 UNIT	mm	THIRD ANGLE PROJECTION	